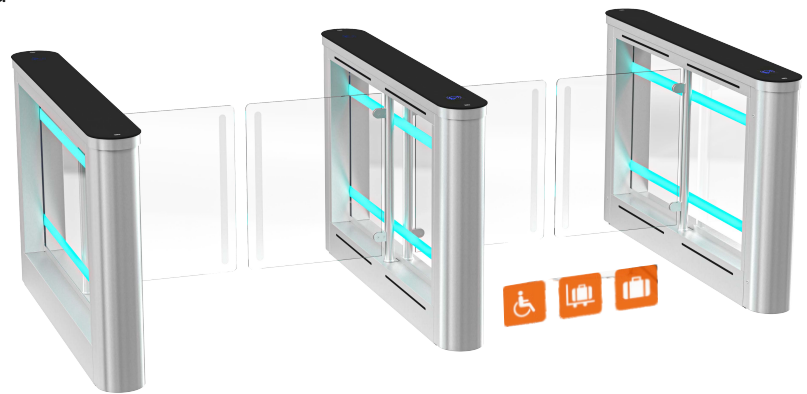


SWEEPER-W

Sweeper speed gate is a perfect solution where contemporary aesthetics and functionality are required.

The glass top and side panels provide a feeling of transparency and make it ideal for the most demanding building entrances.

The swinging waist-high turnstile Sweeper can operate in two modes: normally closed and normally open. Both access directions are free when the turnstile is deenergized.



PERFECT SOLUTION COMBINES FUNCTIONALITY WITH
CONTEMPORARY AESTHETICS DESIGN



Key features:

- BMDrive® - Reliable mechanism with powerful BLDC gear motor ensures long term maintenance-free operation;
- Speed gate equipped with smart self-diagnosing system;
- Innovative controller with OLED display and buttons for easy setup and configuration without special programmers;
- Digital control of force and leaf speed in combination with safety sensors prevent person from being struck by a leaf, even in case of an unauthorized passage;
- Sensor system allows detecting the passage of person with luggage, or arranging a free exit without the need for identification;
- Elegant cabinets equipped with integrated LED lighting showing access status and card reader area
- Same dimensions of cabinet for normal (550 mm) and wide lane (900 mm)
- The ability to customize housing design and top lid;
- Low power consumption;
- Can be integrated with any type of access control systems;
- Wired remote control panel in standard kit;
- In case of power failure, leaves could be opened manually (fail-safe).



www.tiso.global
+380 (44) 291-21-11
e-mail: sales@tiso.global



Technical Specifications:

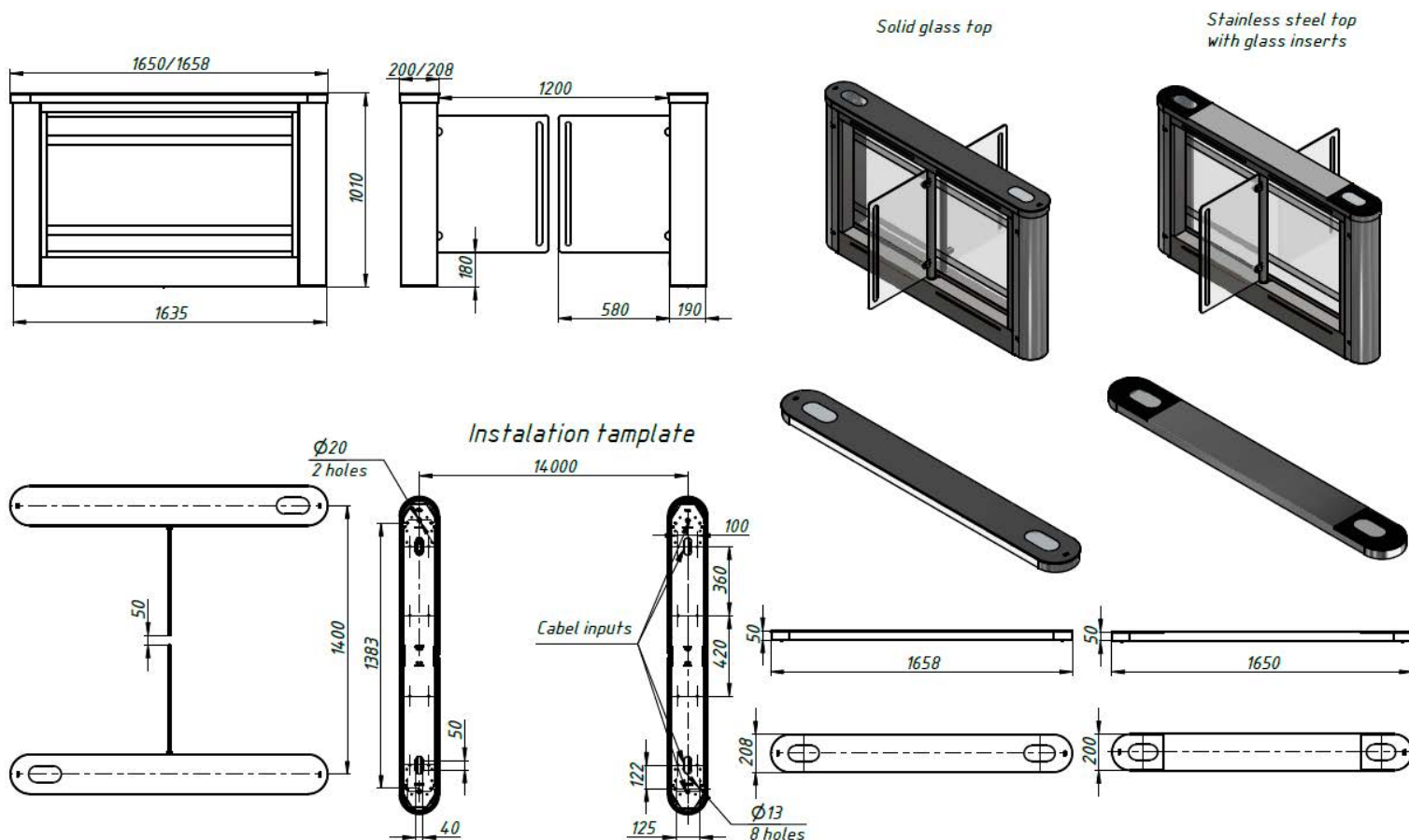
Sweeper-W	Stainless steel top with glass inserts	Solid glass top
Cabinet width, mm	190	208
Cabinet length, mm	1635	1650
Cabinet height, mm	1000	1010
Passage width, mm	1200	
Opening/closing time, sec	0,6	
Mechanism	BMDrive® servodrive (BLDC)	
Blocking system	ToothLock®	
Emergency mode (fire-alarm)	Free entry/exit (leaves are opened automatically)	
Power fail	Fail safe (gates could be opened manually — standard)	

Electrical Specifications:

Voltage	From the AC (100-240)V, 50/60Hz; from a DC source 12 V
Indication	DotLights®, RFIDLights®, EdgeLights® FloorLights®

Finishing

Standard housing	Brushed SS AISI 304
Available housing	Brushed SS AISI 316; Polished SS AISI 304; Polished SS AISI 316; Powder coated RAL



* dimensions for solid glass top lid



www.tiso.global
+380 (44) 291-21-11
e-mail: sales@tiso.global

